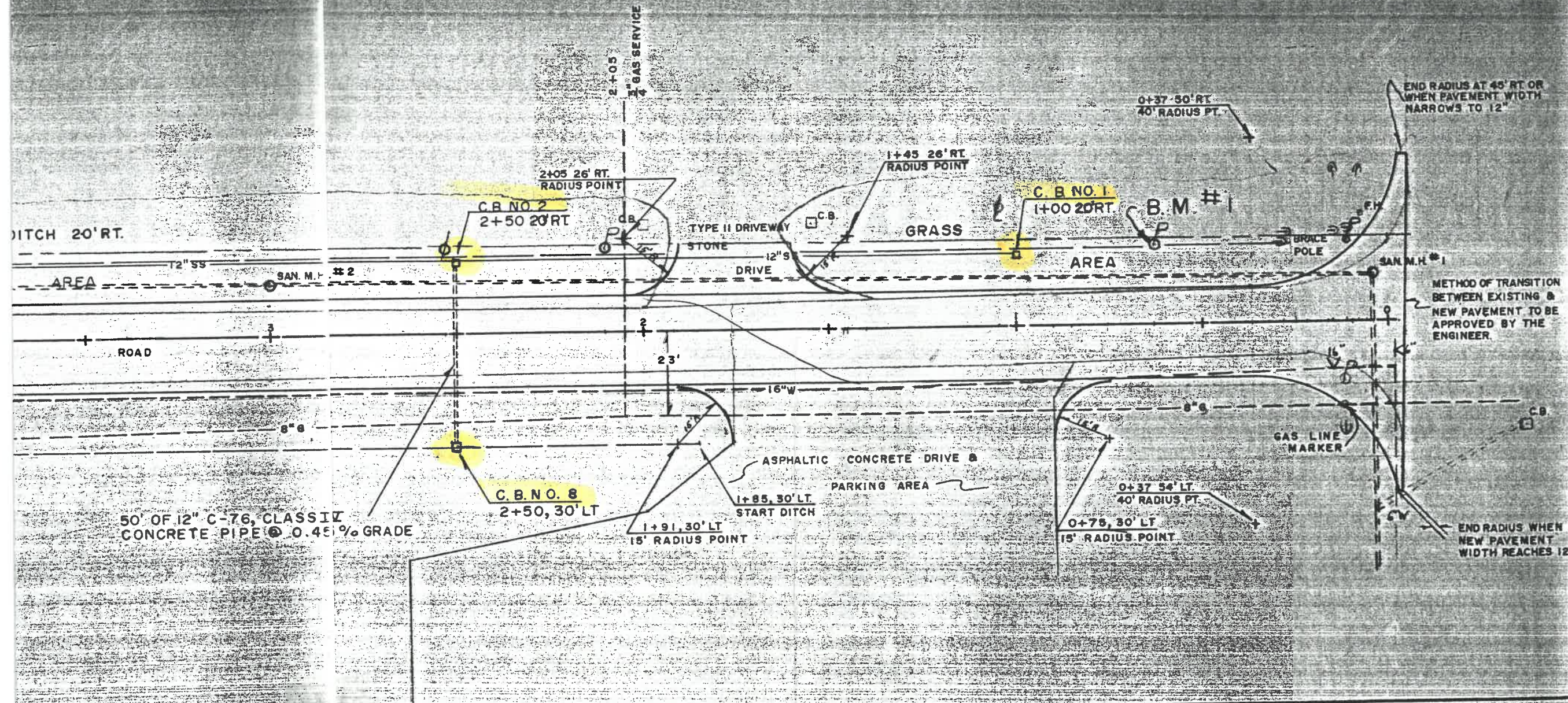
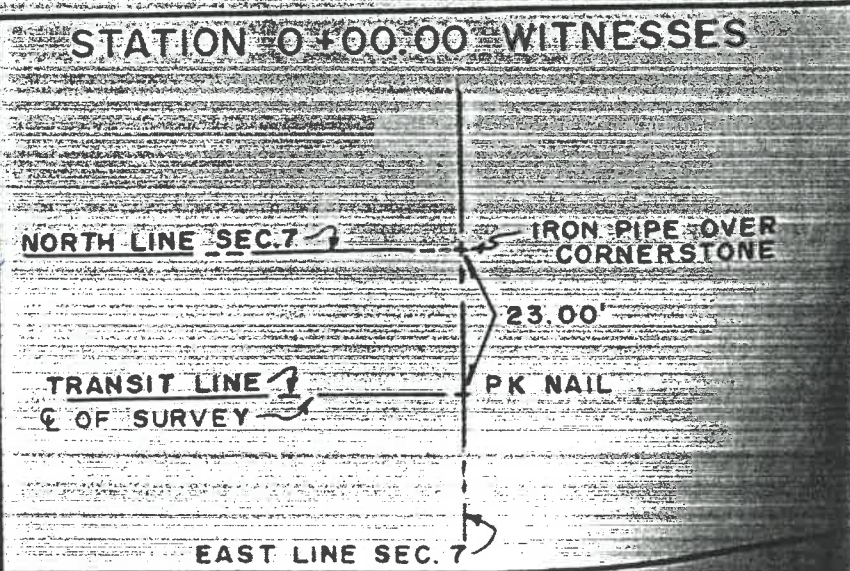


SIDE POWERPOLE AT STATION
 0+63 21.5' RIGHT
 ELEV. 679.51



50' OF 12" C-76 CLASS II
 CONCRETE PIPE @ 0.45% GRADE



*1270
 Independent*

END RADIUS AT 45' RT. OR
 WHEN PAVEMENT WIDTH
 NARROWS TO 12"

METHOD OF TRANSITION
 BETWEEN EXISTING &
 NEW PAVEMENT TO BE
 APPROVED BY THE
 ENGINEER.

END RADIUS WHEN
 NEW PAVEMENT
 WIDTH REACHES 12"

POWER POLE, 2' ABOVE GRADE
AT STATION 6+12, 22' RIGHT
ELEV. 680.77

